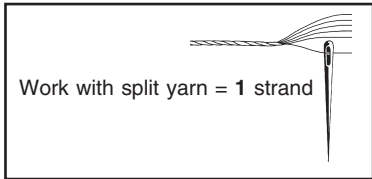


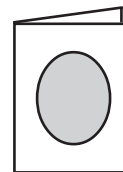
PERMIN

Scandinavian art needlework



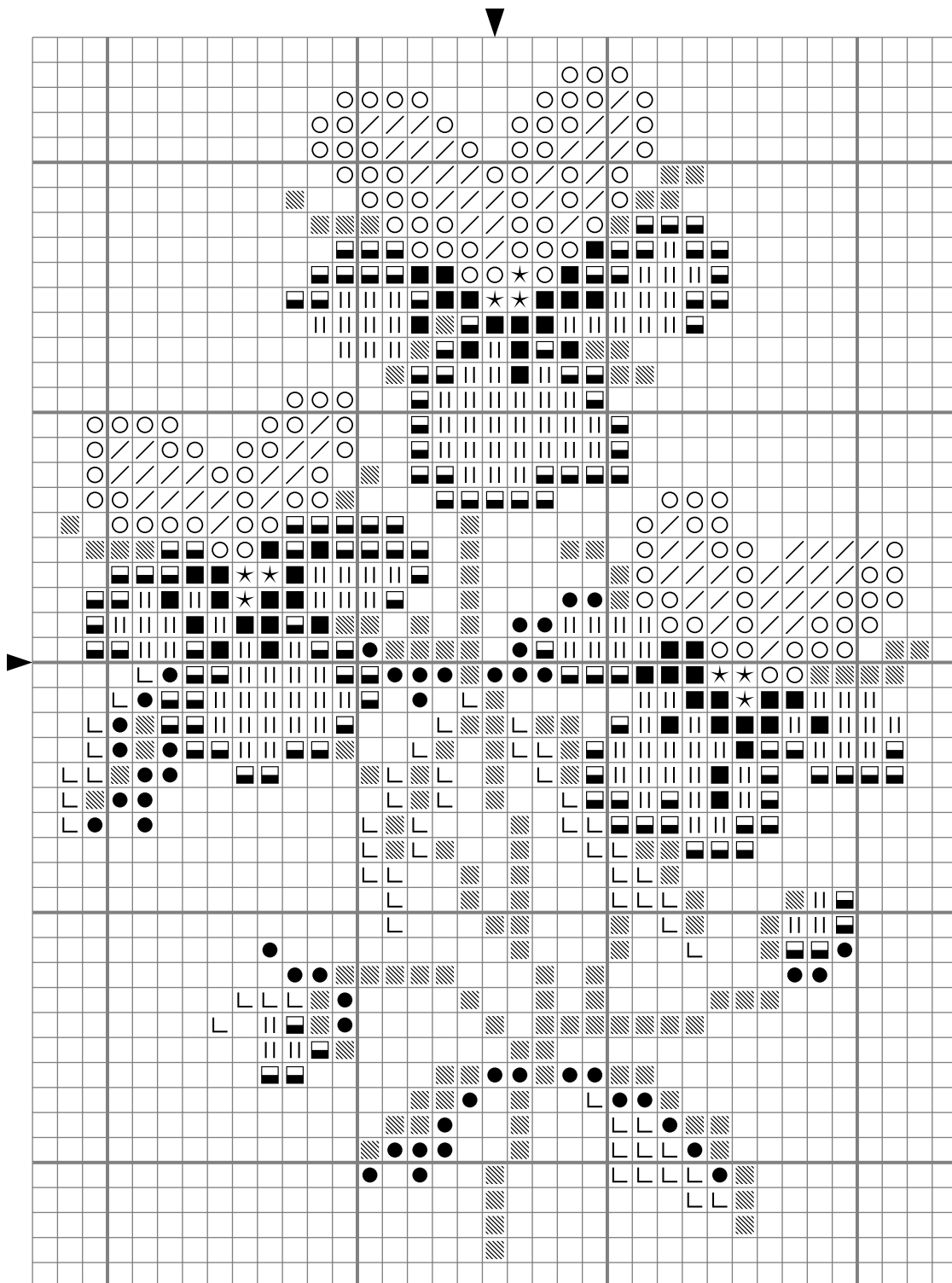
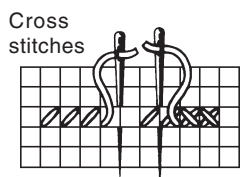
For this design please use
Permin aida fabric. Item no.
359 in colour 22 (359/22)
Cut size: 9 x 11 cm

1 = 1 in the fabric
Count the design from centre of fabric



CARD & ENVELOPE NO. 5875/22

- 973. YELLOW
- 798. BLUE
- 820. DARK BLUE
- 210. LIGHT LILAC
- 208. LILAC
- 954. LIGHT GREEN
- 911. GREEN
- 3818. DARK GREEN
- 310. BLACK



DMC
117



Made in Denmark©